



WALKER CLOSE AND BROOKLYN HALL ASSOCIATION
Serving the Hobsons Bay Community



Walker Close and Brooklyn Hall
Association Inc.

ANNUAL REPORT 2019-20

30th November 2020

Walker Close Community Centre

180 Millers Road, Altona North 3025

Brooklyn Community Hall

Cypress Avenue, Brooklyn 3012

ACKNOWLEDGEMENTS

The Walker Close and Brooklyn Hall Asso. Inc. would like to thank the following organisations for their ongoing support



Walker Close Community Centre was purpose built by Hobsons Bay City Council in partnership with the local community and opened in July 2004.



Hobsons Bay City Council

We proudly thank Hobsons Bay City Council for the recurrent funding support provided to the association to help cover the operation costs for Walker Close Community Centre and Brooklyn Hall.



Victorian Department of Health and Human Services

We thank the Victorian government Department of Health and Human Services (DHHS) for the recurrent funding support provided to the association to help cover management and coordination costs.



ExxonMobil Altona Refinery

We would like to extend our appreciation for the substantial contribution made towards the purchase of computers, data projectors, website design software, data projector screen and in-kind office furniture which benefits the association and the community at large.



Officeworks

We are appreciative to the Altona North Store for supporting the Altona North and Brooklyn Community in partnership with Walker Close and Brooklyn Hall Association Inc.



Hobsons Bay Community Fund

We would like to thank the Hobsons Bay Community Fund for supporting the "Revive" exercise program for people over 50 with a disability. This program benefits elderly people through healthy exercise, creating connections with likeminded people and establish friendships and a sense belonging in the community.



(ANOA)

We extend our thanks for the vital funding support to our elderly people health and wellbeing structured physical activity project we run in a safe and welcoming environment



CONTENTS

Acknowledgements	2
About us	4
Our vision.....	4
Our vision.....	4
Statement of purposes.....	5
Some of the highlights	6
Walker Close Community Centre Real Impact Real Value	6
Key Facts Hobsons Bay Community Centres.....	6
What is impacted on us.....	7
What have we achieved.....	7
Our key priorities.....	7
Chairperson's report.....	8
Service and programs	9
Centre Manager's Report.....	10
Brooklyn Community Hall development	12
Our community garden	13
Spring into life.....	13
Volunteering	13
Partnerships and networks.....	14
Our community development focus	15
Emergency relief assistance.....	16
Auspicings and partnership projects.....	16
Training and courses	18
Participation by category programs/activities.....	19
Treasurer's report.....	20
Committee Members declaration.....	21
Appendix A - Financial Statement.....	22
Appendix B – Notes to the financial statements.....	25
Appendix C – Independent auditors report.....	27

ABOUT US

The establishment of Walker Close Community Centre & Brooklyn Community Hall has been undertaken strategically to provide services to the community based on its statement of purposes in line with Council's social planning process to encourage, support & assist community development initiative that arise from, &/within the community.

The facilities at Walker Close Community Centre & Brooklyn Community Hall include functional rooms that can facilitate small or large groups for classes, activities, forums, family functions and gatherings. These facilities are available to and well utilized by both the community and commercial groups. The Centre offers a warm and welcoming atmosphere in which community facilities for social activities are provided. It is also centrally located for easy access for users which encourages residential participation and ultimately, promotes a sense of belonging for those in the community.

- ▶ Walker Close is one of the nine neighbourhood house/community centres in Hobsons Bay.
 - ▶ Opened in 2004 (Incorporated in Nov 2006)
 - ▶ Funded by Hobsons Bay Council, DHHS, and hiring of facilities
 - ▶ Grants from local businesses
 - ▶ Services Brooklyn and Altona North Community
- ▶ Includes two facilities:
 - ▶ Brooklyn Community Hall (Cypress Avenue); and
 - ▶ Walker Close Community Centre.
- ▶ The home of over 45 CALD (ethnically) diverse community group.

OUR VISION

Being responsive to community needs and "creating a community that sustains itself".

OUR MISSION

Provide opportunities, build capacity and advocate for our community



Governance

The Walker Close & Brooklyn Hall Association Inc. is governed by a volunteer committee of management, a diverse group of community leaders and key decision makers who provide vision, mission, strategic leadership, advocacy, accountability and stewardship. The committee typically consist of 5 to 6 members and are elected at the Annual General Meeting.

Committee of Management Members

Chairperson	Rebecca Nikau
Vice Chairperson	Clovica Mwamba
Secretary	Geoff Peacock
Treasurer	Tumaru Taku
Member	Mark Clarke



STATEMENT OF PURPOSE

The purposes for which the incorporated Association is established are:

- a) To provide welcoming environment which is affordable and accessible to everyone, from all ages and backgrounds. Recognising that our community comes from all parts of the world, can come together to find relaxation, learning opportunities, companionship and involvement in the local community in a financially sustainable manner.
- b) To encourage, support and assist community development initiatives that arise from, and/ with the community.
- c) To encourage practical support, direction and skill development for disadvantaged people and families in our community, which promote independence, access to community, social and other group activities.
- f) To develop community awareness and involvement in environmental matters and to lead by example in promoting environmentally sound practices and procedures within and around the Centre.
- g) To form links with other community organisations in order to share information and resources via networks and/or membership of relevant bodies and committees.
- h) To encourage the community to take part in the planning and management of the Walker Close and Brooklyn Hall Community Centre.
- i) To encourage and model acceptable behaviour which will have a positive impact on the social fabric of our community.
- j) The program of activities / events / hiring of facilities shall be delivered in an equitable manner.
- k) To maintain and protect the building and its surroundings.
- l) To engage in charitable and/or benevolent activities which are consistent with these purposes.



SOME OF THE HIGHLIGHTS

Walker Close Community Centre

Real Impact. Real Value.

As part of our shared community service delivery, every year Neighbourhood House Victoria conducts a survey of its members. We completed in March 2020 and these are key findings with a great outcome of **250 % real value increase.**


INCOME
\$207,090

Services include:

- Room hire: **\$1,500**
- Tax Help: **\$1,500**
- Auspicing other organisations: **\$5,096**

Employment value

2.30 FTE jobs

including 1.7 direct and 0.6 indirect Full Time Equivalent positions


VALUE
\$725,470

This figure includes the value of:

Improved quality of life through social connection: **\$680,230**

Volunteer contributions: **\$37,143**

Services provided: **\$3,000**

This community value equates to:

\$3.50 for every \$1 of income

\$9.15 for every \$1 of Neighbourhood House Coordination Program funding

Over \$151.14 for every hour the neighbourhood house is in use



These calculations were conducted by Neighbourhood Houses Victoria Based on data provided in the 2019 Neighbourhood Houses Survey. Only activities where a determinable valuation method exists are included

KEY FACTS – HOBSOS BAY COMMUNITY CENTRES



9 CENTRES

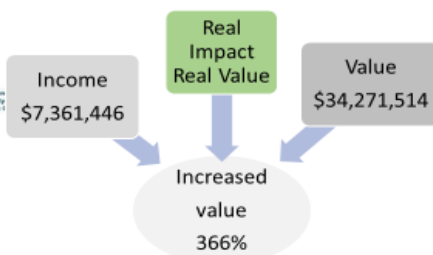
8 Neighbourhood Houses

4 Childcare providers

4 Learning locals

2 Registered Training Org (RTO's)

Volunteer contribution \$1,469,226



	Every	Equates
Community value	\$1	\$38
Neighbourhood Hs. coordination	\$1	\$343
Neighbourhood houses in use	1 hr	\$10,032

Community education and support provided

Improved quality of life \$5,813,635	Emergency Relief assistance \$579,917	Service provided \$346,384	Adult community education \$18,762,780	Early childhood learning \$1,865,957	Kinder provided \$127,264
---	--	-------------------------------	---	---	------------------------------

Our Strategic objective

To ensure that the Centre provides vibrant, accessible, and diverse services/programs to assist in building and

WHAT IS IMPACTING OUR COMMUNITY CENTRE?

The local community is complex, with a high number of disadvantaged people and with high level of cultural and linguistic diversity seeking support and services. There are complex social issues that need to be addressed such as relief services, wellbeing support for elderly people, personal counselling, referral services, concerns about safety and social isolation in the area. Our motto is "our diversity is our beauty & our strength is our unity". With this insight, we closely monitor the programs/activities and services we deliver to ensure they are

meeting the needs of the community.



WHAT HAVE WE ACHIEVED?

- Increased participation
- Provided programs and activities relevant to the community
- Volunteers participation and contributions have increased
- Maintained on going management capability and built good governance
- Worked well in partnership on projects relevant to community
- Supported various community group and individuals to accomplish aimed projects
- Provided accredited courses in partnership with training organisations
- Developed a forwarded strategic plan



Our key Priorities

- Look at how we can further respond to community needs
- Continue to develop strong partnership with local service providers
- Review, ongoing development and diversification of service delivery
- Strengthening governance and sustainable reporting
- Evaluate the level of community satisfaction with services offered by the centre using satisfaction survey.

CHAIRPERSON'S REPORT



The year 2019-2020 has started off with great expectations in fulfilling our vision and mission through matching our ideas with available expertise and resources, being able to address our diverse community needs we are working for, whilst ensuring that targets in all areas of our strategic plan were being met.

Our community is made up of a group of dedicated people who either work or live in the local area. Together we meet to ensure that centre, as an incorporated body, act in accordance with its statement of purpose and funding agreements and that the centre continues to meet the needs of the local community

Despite, the fact that we are affected by the global pandemic we remain being resilient to continue deliver our diverse programs and services in the new normal by adopting a new approach.

Members of the committee ensure that everything in which we are engaged, reflects the vision of making Walker Close and Brooklyn community that we are responsible in fulfilling all the legal, ethical, functional, reporting, financial and compliance obligations as well as being responsible for adequate governance, policy review and development, funding body reports,.

The changing community necessitates the need to diversify and promote programs and to establish connections to discover what the community requirements are in the new normal and deciding how to provide these

services in a safe environment in house or other means.

We continue to maintain a constructive working relationship with Hobsons Bay City Council and Department of Human Service by ascertaining the KPI's and reporting requirements have been met over and above with a remarkable increase of

250% community value achievement reflected on 2019 Neighbourhood Houses survey report.

Over the coming years being vigilant we will continue to implement and develop strong links with other organisations to enhance the Centre reputation by adopting a new strategic approach to deliver services and programs to the community in a new normal way of life.

I would like to take this opportunity to personally thank my fellow committee members for the time and effort they have each given to the Centre over the past year. Without their assistance, my job as a Chairperson would have so much harder.

The day-to-day operation of the Centre is overseen by our dedicated manager Ayelign Tessema supported by a small staff. His efforts are key to the Centre and its ongoing services as a viable service delivery operation meeting the complexity of accountability compliance requirements. I would also like to thank our admin support team members Verana Hunter-Raye, Colleen Nelson and a dedicated volunteer Bilijana Joveska for their valuable input.

Before, I finish, I would like to extend my thanks to the City of Hobsons Bay and Department of Health and Human Services for the recurrent funding support given to us to cover some of the operation coordination costs to the centre.

In closing, I thank all those involved in the Walker Close Community Centre and trust you have found personal satisfaction and reward for the gift of your time and effort to make this place such an important of our community.

Rebecca Nikau
Chairperson

SERVICES AND PROGRAMS

Programs and activities are dynamic and closely monitored there is always changes depending on the needs new entries are in place.

Every year the Centre actively run programs/services using the two facilities: - Brooklyn Hall in Cypress Avenue, Brooklyn and Walker Close Community Centre, Altona North.



Services

- Emergency relief support
- Immunisation
- Emergency relief
- Tax help
- Community garden
- Maternal & child health
- Parent information sessions
- Referral service



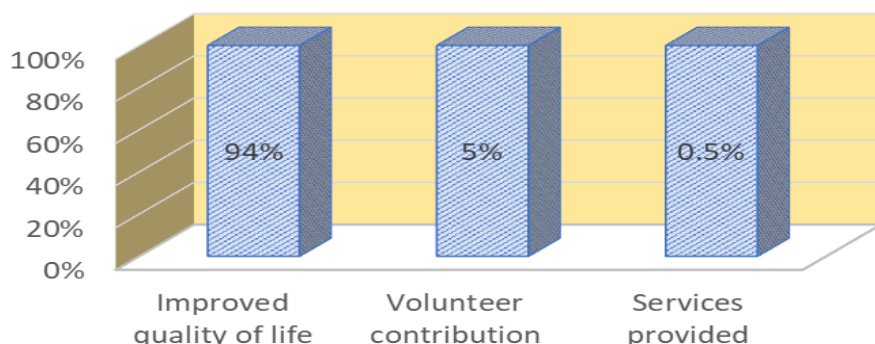
Programs & courses

- Creative memories
- Karate for self defence
- Bone Boosters
- cultures and belifes
- Professional Camera club
- NIES Clours for small businesses
- Community servcies courses
- Craft group
- New mums group
- Combined Probus
- Booroom dance
- Brazilian dnce
- Revive exercise for +50
- Play Group
- Dance classess



The Centre services and programs are dynamic; there is always a change depending on the needs of the community. When some of the existing community groups move out newly emerging community groups join the community. And thus, new programs developed and put in place to meet the needs of the prevailing community needs in line with the Council's Social Planning Process.

CENTRE DELIVERY REAL VALUE



CENTRE MANAGER'S REPORT



It is with great pleasure that I present this my twelfth annual report as a manager of Walker Close and Brooklyn Hall Asso. Inc.

As I compose this report, I am very mindful the year has been incredibly challenging which we have shared with the wider society. The coronavirus COVID-19 pandemic has had significant effects on many of our activities.

Until the last quarter of the financial year March 2020 we have been actively busy running various activities at the two facilities alongside supporting quite a number of auspiced group projects.

We are proud to have

implemented “Create a

Vibrant Community Together” project and have celebrated by creating opportunities to enhance health and social well-being to advance lifelong

learning with diverse programs and activities based on community needs analysis

and social planning with Neighborhood houses within the Hobsons Bay areas of Brooklyn and Altona North

to come together and share their cultural experiences and views with the wider community. By doing this we achieved:

- Increased knowledge and understanding of culturally diverse community value.
- Created stronger community bonds within the community group
- Increased awareness of the activities and services available to the community through this we re-engaged cultural/ethnically diverse groups to participate in the life of the community. We ensured the use of facilities & spaces are affordable to the community & expanded individuals & group connections.

14 October 2019 love of music event



We are lucky to have many people with ideas and energy for things to happen all they need is some support from us to make it happen.

I would like to thank our dedicated team of staff and volunteers for their ongoing support and dedication. It is my great privilege to work alongside such as fantastic group generously gave their time being passionate to contribute to our community.

I would also, would like to thank our Committee of Management for their commitment to the Centre and the support they provide to me in my role. In particular our Chairperson Rebecca and treasurer Tumarū for working closely being available and

department staff and other council staff members for the excellent working relationship and support to Walker. It is a privilege to work with such a wonderful, talented team.

I also would like to thank all Hobson Bay Community Centre managers for the collaborative working relationship we have. It is a privilege to work with such a wonderful team. Our collaborative work is amazing no matter how much strong, skilled, talented or experienced we are individually, but our collaborative effort is amazing which excelled 366 % community value impact for Hobsons Bay Community service

28



sparing their extra time whenever needed.

With this opportunity I would like to thank and acknowledge all of our partners who collaborate with us to provide meaningful and needed programs/activities throughout the normal and challenging years.

A big thank you goes to the Hobsons Bay community development and facilities

November connect community event

delivery as reflected on 2019 Neighbourhood Houses Victoria survey as attached on the last page of this annual report.

As we move towards to meet challenges in the coming year in order to back to normal life, we have learned a lot from this pandemic and are conscious community must feel safe and build trust in between



14 Dec 2019 create vibrant community event



looking after each other's
 safety; rebuild community
 confidence when

gathering in public or private
 spaces. I look forward with a
 sense of optimism, to continue
 deliver responsive services that
 will empower individuals to
 contribute to their community
 with the wonderful people
 who share common
 aspirations.

Thank you
Ayelign
Tessema
Manager



BROOKLYN COMMUNITY HALL DEVELOPMENT

Council's commitment for the Brooklyn Reserve improvement: open space, more car parks, playground, foot path etc has enhanced the quality of community services delivery at Brooklyn community hall. Lots of interests have been raised. While appreciating council's effort for improving the reserve, additional improvements are required to the hall itself and subsequently the council has demolished the Kender behind the hall and is underway the Brooklyn Hall will be extended with a number various rooms which can accommodate various activities and programs at the same time and will be flexibly used by diverse community groups. We are hopping it will be ready the sooner in the middle of next year. The groups who have been using the hall are eagerly waiting that to happen while appreciating the council's undertaking the construction. The new outside facilities look.



During this reporting period from July to March before COVID-19 locked down quite a number of regular programs/activities have been actively running include:

- The Dance Dreamers, dance training for children and adults, TAP, JAZZ, Ballet every Saturdays
- Williamstown camera club, meet & create new friends, share and again skills anyone welcome to the club to learn and how to use camera for effective photographic imaged
- Cook islanders' youth group, traditional dance and music training every Saturday evening
- Traditional self-defence karate for the local community, run regularly every Monday and Thursday evening.
- Altona North Combined Probus, the semi-retired and retired professionals and business entrepreneurs' social activity groups share their diverse experience and skills and to strengthen their relationship through socialisation.
- Macedonian pensioner group meet thrice in a month to celebrate and practice their culture and social activities.
- Every Sunday a large diverse community group member with a bond of common interest come together and harmoniously celebrate their culture and religious belief.
- A community Forum, Brooklyn Community Reference Group (BCRG) occasionally meet at Brooklyn Hall to facilitate community, industry, local government and EPA working together to ensure that public concerns and aspirations regarding odour, noise and dust in the general Brooklyn area are constantly understood and considered.
- Cook Islanders' senior group meeting and practicing their cultures and believes every Sundays

Our community garden at Brooklyn

STARWEEKLY.COM.AU NEWS



Ayelign Tessema and Verana Hunter-Raye. (Joe Mastroianni)

A growing concern

A Brooklyn community garden is about to sprout and people are being invited to share their ideas for its growth.

Project manager Verana Hunter-Raye said the idea started from a group of women who came up with the '3012 Community Interactive Green Space' initiative.

"That was because the Altona North and Brooklyn areas are one of the highest low-socioeconomic and disadvantaged areas in the west," she said.

"And also for food security and sustainability – just making sure that people have a place where they can grow some healthy food.

"Also, it's a place for socialising and for increased community wellbeing."

A community meeting will be held at the site of the garden, behind Brooklyn Community

Hall, on Sunday.

"That's aimed at getting some of the plants planted and also getting some feedback from the community about how they'd like to see the area developed," Ms Hunter-Raye said.

The project is supported by Hobsons Bay council and Walker Close Community Centre in Altona North, and has received a donation from Bunnings.

The meeting is at Brooklyn Community Hall in Cypress Avenue on Sunday, May 5 from 11am-2pm. Another meeting will be held at the hall on Sunday, June 9 from 1-4pm.

For more information contact 3012cigs@gmail.com or 0431 412 446.

Goya Dmytryshchak



PARTNERSHIPS AND NETWORKS

Collaboration and partnership remain a priority and relationships with formal and informal partners continue to be productive. Such strong connections enable continuous conversations around community need, opportunity for creative responses and enhanced organisational profile. Our community service is linked with various community group few of them.

<ul style="list-style-type: none"> • Cook Islander community group • Tonga community groups • Macedonian community groups • Chin community group • Serbian community group • Arabic community group • African community group • Retired semiretired seniors' group • Camera club group 	<ul style="list-style-type: none"> • Indian Australian seniors group • Altona Karate club • Brooklyn Tennis club • Maori Polynesian community group • Brooklyn community reference group • Hobsons Bay Community Centres • Hobsons Bay planned activity group • Marina Age Care • Lorraine Beddela seniors etc.
---	--

Though each one of us are different, and no matter how strong individually we are, we believe it is much better when community services are delivered jointly. This inclusive approach creates more opportunities for individuals and groups to enrich their lives through connections they might not otherwise make.

Spring into life

Spring into life is an annual event organised by the council and hosted by the Neighbourhood houses to engaged and participate with different programs and activities to create an opportunity to discover what is available in our local area and spring into something fun in September. This year we participated with the programs and activities include:

<ul style="list-style-type: none"> • Revive exercise 50+ cardio based exercise to build and maintain energy levels etc. 	<ul style="list-style-type: none"> • Martial arts for self-defence, young and adult, self-empowerment and discipline
<ul style="list-style-type: none"> • Early bone boosters for women group only stretch and weightlifting exercise help stronger bones. 	<ul style="list-style-type: none"> • Ballroom dance with opportunities from beginner to advanced lessons. A great way to meet new friends and have fun
<ul style="list-style-type: none"> • Little Bees dance. Preschool Dance for boys and girls age 2-5 years 	<ul style="list-style-type: none"> • Dance training TAP, JAZZ, classical ballet • ABADA Capoeira Brazilian dance

Volunteering

The Centre relies on the work of volunteers to provide the services it does. There have been many opportunities to learn, grow, give back to community and get involved. Volunteering remains at the heart of Walker Close.

Obviously, board members are volunteers who are totally committed to the centre devoting their time representing the CALD community working, co-operatively in support of the staff and volunteers. I am thankful to all committee members.

In 2019-20 the volunteers with Walker Close contributed on an average of 115 hours per month of volunteer time. The Centre appreciates for sacrificing their time, energy & valuable skills.



Free Tax Help services from July to end of October has been provided to by Taxation office volunteer and I would like to thank Brian Gorman for his professional service every year.

Thank you Biljana Joveska manning the reception office every Mondays and Thursdays receiving phone calls and answering various community enquiries

and updating weekly group attendance.



There are a lot of opportunities to serve the community. So please, if you haven't already, pop in come an visit us and see how you can get involved an help us achieve our goals for Altona North and Brooklyn as a whole the Hobsons Bay Community.

OUR COMMUNITY DEVELOPMENT FOCUS

To support Council's social development, plan the centre provides a range of services and programs for people of all ages of community group in the areas of **health and wellbeing, social, educational, recreational programs, information and referrals** in a welcoming and supportive environment **to inform how Council responds to the needs of the community related to equitable access effective & efficient use of resources, sustainable community involvement, respect for diversity, collaboration and development partnerships with creates a sense of belonging in the community.**

Through these information (i.e. via surveys, interviews and key community informants) specific programs/activities provided to target group and Centre programs & services provided to the community is in line with council's social planning priority areas.

Health & ageing well

Building community connection is vital in, the centre provides opportunities for people to actively participate in community activities & more effective use of community facilities as meeting & participation points between group of people such as weightlifters group, bone booster group & socialization group which encourages culturally diverse groups to participate in the life of community.



Disability services

The Centre provides flexible support service to people with disabilities to participate in a recreational activity combining physical fitness & exercise with social activities & creating awareness of council services to those who are older & isolate. Encourage them by providing useful information a sense of inclusion & a means of possibility to meet their individual needs depending on their level of ability & interests. Based on these need we developed a project a special focus for people 65+ aimed at providing a qualified professional physical trainer to assist structured physical activity in a fund, safe and welcoming environment at Brooklyn Community Hall.

BEGINNING JANUARY 2020 ACTIVE AND HEALTHY LIFE.



The program creates opportunity to increase physical wellbeing and socialize with like-minded friends by creating an active and healthy life. The participants require their Dr recommendation and or from rehabilitation centre. This vial project is funded by Active Neighborhood for Older Australians (ANOVA)



Diverse activities

The services vary according to the individuals and age group needs we create opportunities to come together & share their experience & cultures. Encourage and acknowledging people's support and positive contributions to the community and local organizations are vital to continuing the running of such programs. **Social community connections.**



The objectives of this program are to combat social isolation and loneliness issues in the community and to:

- Increase the capability of participants to connect with both their community
- Increase the capability for the community to support the socially isolated
- Increase collaboration between service providers to assist people experiencing social isolation.
- Create an opportunity to have access programs to share their practices and experiences.

EMERGENCY RELIEF SERVICES

One of the crucial services provided at Walker Close is the outreach emergency relief assistance service provided every Tuesdays and Wednesdays.

This service has been so vital to the Altona North and Brooklyn where there are large number of disadvantage community group who are highly dependent on this service referred by individuals, organisations, community workers, carers, and those drop in by themselves. Our support to the service includes providing convenient space, promoting the service, providing appropriate information and referrals. But it was unfortunate to deliver the service smoothly face to face this year. But we continued referring clients online to the appropriate organisations

We would like to thank Laverton Community Integrated Services for providing this important service in collaborating with us receiving our call transfer and providing food parcels and other related assistance which has been very useful to those who are in crisis within our community especially during this unprecedented time of crisis

REVIVE EXERCISE PROGRAM

A program run by a qualified fitness instructor specifically designed to improve the fitness and wellbeing of people over 50's with disabilities, the exercise includes:

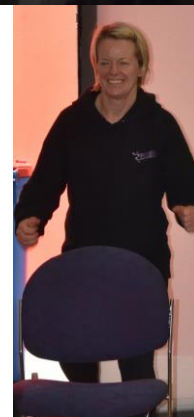
This exercise program is quite beneficial to a number of local residents, helping them to establish relationships with other groups and create a sense of inclusion and belonging in the community.



Program story

The program has had a significant positive impact to the people attending the program is generating increased community interest. There have been some wonderful stories from the participants of the program developed increased mobility, build friendships and promoting increased holistic wellbeing.

At the community centre there has been a steady rise to the enquiries received regarding the program from individuals in the community and from local and surrounding organisations providing support services promoting the community centre to possibly



provide similar programs in the future.

We would like to extend our thanks to Melissa Moorfoot for her professional service to effectively run this program by creating great motivation and enthusiasm between the group. With the increase number of participants and higher interest it is now running two days in a week Monday and Wednesday between 1:30pm to 2:30pm. Anyone interested is welcome to join. Why not contact the Centre today!

AUSPICE & PARTNERSHIP PROJECTS

As part of our community development role we provide auspice support to various unincorporated non-for-profit community groups or projects for their funding arrangements with government or philanthropic sources abided by memorandum of understanding (MoU) .This year we continue providing this service for the following groups/project.

Auspiced group	Projects
ParkAndo Parkinson	<ul style="list-style-type: none"> To increase the number of peer support groups by creating active opportunities for people impacted by Parkinson's
Community Tributary	<ul style="list-style-type: none"> Digital story telling, connecting communities from culturally and linguistically diverse groups to share and learn from experience
Brooklyn Community group	<ul style="list-style-type: none"> To come together have coffee and celebrate together for a common benefit and support each other
Brooklyn Art & Craft	<ul style="list-style-type: none"> Learn community through Art and Craft and get connected
Women's Network group	<ul style="list-style-type: none"> With a special focus through women's leadership program bringing new skills build confidence and knowledge.

TRAINING & COURSES

One of Walker Close Community Centres strategic objectives is to work in partnership with teaching organisations to deliver short courses that benefit the local community.

Certificate IV in Small Business Management

Holmesglen College provides this course under the New Enterprise Incentive Scheme (NEIS) program, for 3 terms. The course is given for eligible job seekers who are interested in running their own small business.

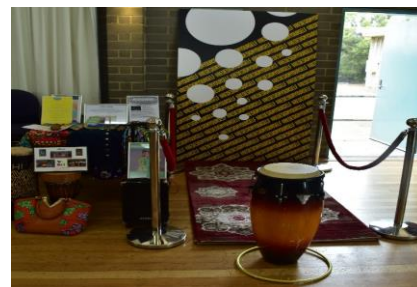
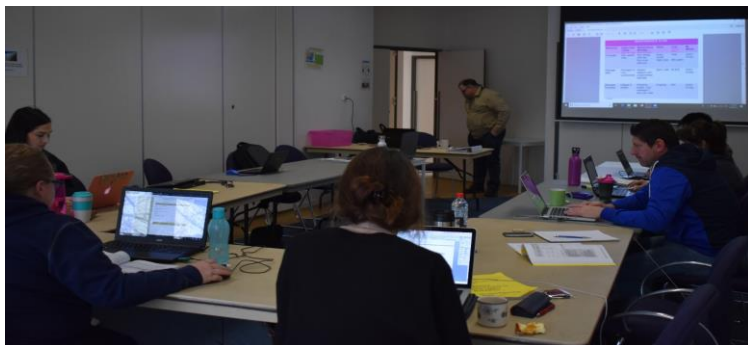


How can this course (NEIS) Help?

- . Accredited small business training
- . Income support for up to 39 weeks once the business started (if eligible)
- . Home rent assistance for up to 26 weeks (if eligible)
- . Mentoring and support during the first year of the new business

Diploma in Community services

TMG collage provides this course every term with an intensive industry practical placement. This program has been beneficial flexibly to all ages of community group includes who are also working and give them further opportunity to upskill their community service delivery skills and experience meeting changing community services delivery.



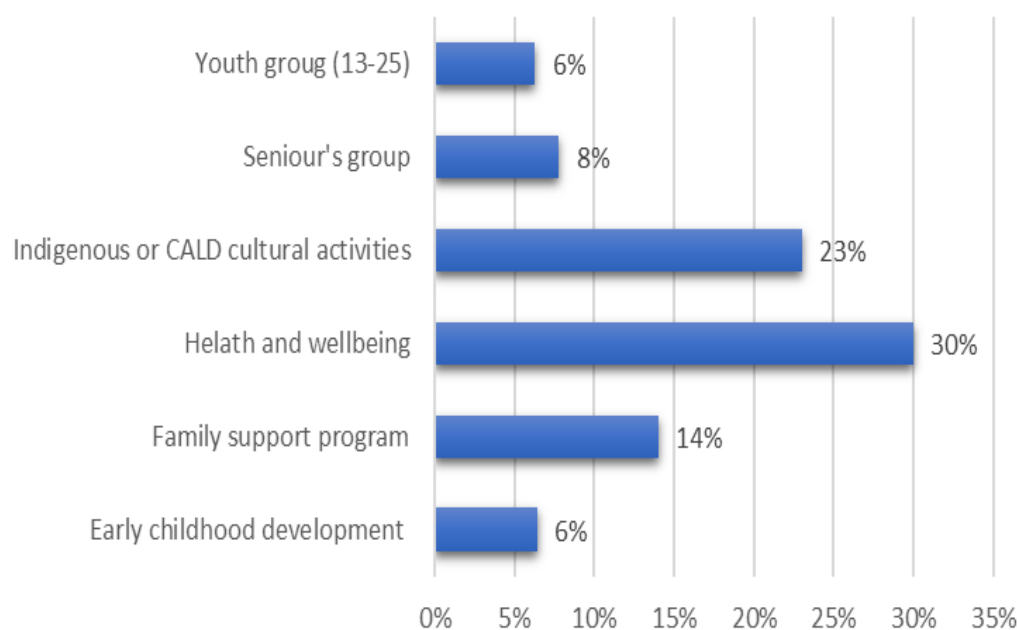
PERIODICAL ACTIVITIES

Many of our services and programs originate from the Altona North and Brooklyn community which is made up of over 45 different nationalities with equally diverse interests.

Walker Close Community Centre is a place where people get connected and can find information and resources, can come together in activities and events; learn and share the diverse experience and cultures that creates a strong community.

During this reporting period quite several structured and unstructured; one off casual programs and functions such as, workshops, training, family gathering, social events and other celebrations have been running prior COVID-19 lockdown until second week of March 2019

Typical week Participation by category/activities



TREASURE'S REPORT



I am with great pleasure to present the 14th Annual Financial year report for Walker Close and Brooklyn Hall Asso. Inc.

This year due to COVID-19 interruption during the last quarter of the year we lost a total of \$22,028 income. The overall financial performance in terms of income and expenditure as compared to the previous financial year showed a decrease of 8.6% and an increase of 0.9% respectively.

To reflect and match the actual income as earned and expenditures as incurred our financial recording system implemented accrual basis of accounting system. This year total income verses total

expenditure was \$189,336 and \$192,295 respectively. The profit and loss statement has recorded a net short of \$2,854.

The major expenditure mainly includes; power usage, salary and wages, promotion, janitorial services, telephone make up approximately

75% of the total expenditure. The full set of accounts can be visualised over the pages in the financial statements contained with audit report.

The Centre income comprises three sources; operational grant from Hobsons Bay City Council, Neighbourhood House Coordination grant from Department of Human and Health Services and from internal self-generated income as reflected on the below statistical data.

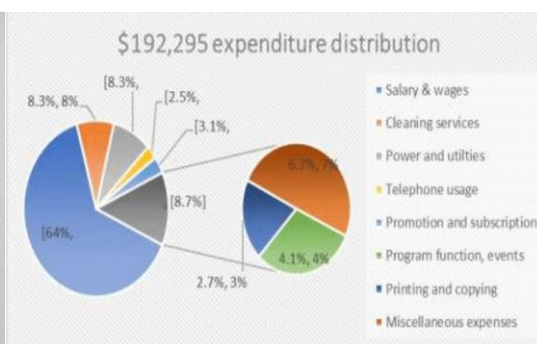
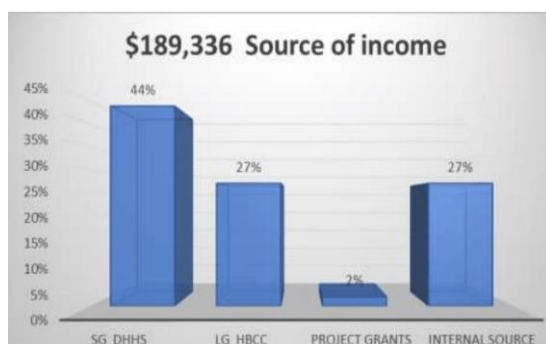
The balance sheet showed a cash contingent reserve to cover unforeseen costs, accrued liabilities and employee entitlements.

I have no hesitation; Walker Close will keep maintain its financial viability in a stronger position in the new normal post COVIC-19.

With this opportunity, I would like to thank Ayelign Tessema, centre manager. His professional advice and help is paramount, without his valuable work the centre finance wouldn't have been strong and to me my job as a treasurer would have not been easy.

I would also like to thank all members of the Committee of Management for their valuable input and I have a strong belief that Walker Close will remain strong and continue deliver its valuable programs and services to the community.

Tumaru Tauri
Treasurer



Statements by Members of the Committee

30 June 2020

As stated in Note 1 to the financial statements, in the committee members' opinion, the Entity is not a reporting entity because there are no users dependent on general financial reports. This is a special purpose financial report that has been prepared to meet the Associations Incorporation Act 1981 requirements.

The Financial Report has been prepared in accordance with Accounting Standards and mandatory professional reporting requirements to the extent described in Note 1.

In the opinion of the Committee the financial report as set out on the next pages.

- (i) Presents a true and faire view of the financial position of Walker Close and Brooklyn Hall Asso. Inc. as at 30 June 2020 and its performance for the period on that date in accordance with Australian Accounting Standards, mandatory professional reporting requirements and other authoritative pronouncements of the Australian Accounting Standards Board.
- (ii) At the date of this statement, there are reasonable grounds to believe that Walker Close and Brooklyn Hall Asso. Inc. will be able to pay its debts as and when they fall due.

This statement is made in accordance with a resolution of the Committee and is signed for and on behalf of the Committee by:

Chairperson.....
 Rebecca Nikau

Treasurer.....
 Tumaru Tauri

Date: 2nd of September 2020

APPENDIX A - FINANCIAL STATEMENT

Walker Close and Brooklyn Hall Asso. Inc.

**Profit and Loss Statement
For the Year ended 30th June**

Income	2020	2019
Neighbourhood House Support	50,736	49,455
NHCP support DHHS	83,034	79,277
Promotion/marketing support HBCC	400	350
Project grant HBCC	3,200	2,888
Total support fund	137,370,	131,970
Internal self- generated income		
Regular users -WC	21,461	37,969
Regular users – BH	18,785	24,383
Casual users – WC	---	871
Casual users – BH	1,461	1,782
Exercise fees	5,060	2,809
Auspice support income	1,464	1,100
Reimbursement – Utilities	3,626	6,012
Printing and photocopy income	63	100
Miscellaneous income	45	94
Total internal self-generated income	51,966	75,120
Total Income	189,336	207,090
Expenses		
Accounts audit fee	1,250	1,200
Advertising and marketing	2,223	1,699
Association membership fee	495	----
Office Equipment supplies	1,539	679
Bank fees	77	171
Maintenance fees	----	9
Bad Debts	----	79
Janitorial services – WC	5,283	2,940
Janitorial services – BH	7,905	6,075
Kitchen amenities	109	212
Cleaning supplies	1,956	1,538
Booking cancellation reimbursement	800	509
MYOB subscription	1,843	2,310
Electricity expense – WC	12,136	11,147
Electricity expense -BH	4,095	4,781
Garbage cleaning	500	50
Volunteer travel expense	1,148	4,105



WALKER CLOSE AND BROOKLYN HALL ASSOCIATION
Serving the Hobsons Bay Community

Donation and support fee	547	260
Exercise program tutors fee	2,345	2,760
General repair and maintenance	648	872
Printing and photocopy	3,390	4,255
Program and group support expense	1,587	1,647
Computer service and fixture	836	1,770
Phone landline and internet	108	1,115
Utility water expense	419	568
Domain name reg. webhosting	-----	1,204
Stationery supplies	1,726	1,342
Office 365 subscription	690	1,398
Event programs promotion	605	2,054
Professional development	1,224	----
Telephone call expenses	4,638	3,208
Postage	9	36
Miscellaneous expenses	605	1,153
Gathering and group activities	2,683	3,024
Meeting amenities	203	472
Workshop program expenses	1,730	1,022
Subscription and membership	727	2,973
Email account hosting	-----	166
Salary and wages	93,904	87,655
Work cover premium	695	787
Long Services Leave entitlement	3,188	2,136
Annual leave expense	-----	3,584
Partnership program expenses	-----	1,265
Admin support wages	15,538	13,940
Travel expense	364	1,236
Annual meeting/workshop expenses	1,005	348
Superannuation contribution	10,523	9,791
Total operating Expenses	191,294	189,544
Depreciation Expenses		
Computers depreciation	397	268
Data projector expense & Camera	528	587
Low value pool dep. Expense	76	77
Total dep. Expense	1,001	932
Total expense	192,295	190,476
Operation profit	(2,961)	16,614
Other Income		
Interest income	58	1,3,11
Other income	49	-----
Total other expense	107	1,311
Net profit for the year	(2,854)	17,925



Walker Close and Brooklyn Hall Asso. Inc.

Balance Sheet As at 30th June

	2020	2019
	\$	\$
Assets		
Current Assets		
Cash at bank current account	186,972	154,092
Cast at bank contingent account	101,600	101,053
Petty cash account	500	500
Total Current Asset	289,072	255,645
Other Current Liabilities		
Trade debtors	2,145	2,340
Total other Current Assets	2,145	2,340
Total Current Assets	291,217	257,985
Non-current Assets		
Fixed Asset at Cost	113,148	112,235
Acc.Dep fixed Assets	(105,798)	(104,797)
Net-Non-current Asset	7,350	7,438
Total Asset	298,568	265,423
Liabilities		
GST Liabilities		
GST Collected	179,843	159,810
GST Paid	(178,203)	(157,220)
Total GST Liabilities	1,641	2,590
Payroll Liabilities		
PAYG Withholding payable	5,862	5,296
Superannuation fund	2,457	2,881
Entitlements LSL	19,494	16,307
Accrued holiday leave	6,956	13,392
Total payroll Liabilities	34,769	37,876
Other Current Liabilities		
Trade Creditors	3,988	4,186
Customer deposit bond	6,133	6,013
A/P Accrual-Utilities	2,936	73
Brooklyn Art & Craft project	700	-----
Give Take Stand Project Aus	-----	1,000
Accounts audit fee accruals	1,100	1,000
Brooklyn Community Project	5,000	-----
ParkAndo Peers Support group project	2,695	-----



Cultivate leadership CT project	-----	1,942
Western Digital Story telling project	2,131	----
Revive Exercise activities	745	----
Active NH for Older Australia (NHOA) project	3,637	----
Women 2 Lean In2 Support Network	4,500	----
Love of Music Connect community Project	4,000	2,500
Total Other Current Liabilities	40,293	16,714
Total Liabilities	76,703	57,180
Net Asset	221,865	208,243
Equity		
Retained Earnings	224,717	190,317
Current Year Surplus	(2,854)	17,925
Historical balancing	1	1
Total Equity	221,865	208,243

APPENDIX B – STATEMENTS OF SIGNIFICANT ACCOUNTING PROCEDURES

This financial report is special purpose financial report prepared in order to satisfy the financial reporting requirements of the Associations Incorporation Reform Act. 2012 (Vic). The Committee has determined that the Association is not a reporting entity. The financial report has been prepared on an accruals basis and is based on historical costs and does not take into account changing money values or, except where specifically stated, current valuation of non-current assets.

The following significant accounting policies, which are consistent with the previous period unless otherwise stated, have been adopted in preparation of this financial report.

a) Cash and cash Equivalents

Cash and cash equivalents included cash on hand, deposits held at call with banks, and other short-term highly liquid investments with original maturities of three months or less.

b) Income Tax

The Association is exempt from paying income tax by virtue of Section 50-45 of the income tax Assessment Act. 1997. Accordingly, tax effect accounting has not been adopted.

c) Property, Plant and Equipment

Leasehold improvements and office equipment are carried at cost less, where applicable, any accumulated depreciation. The depreciable amount of all property, plant and equipment is depreciated over the useful lives of the assets of the association commencing from the time the asset is held ready for use. Leasehold Improvements are amortised over the shorter of either the unexpired period of the lease or the estimated useful lives of the improvements.

d) Employee Entitlements

Provision is made for the Association's liability for employee benefits arising from services rendered by employees to the end of the reporting period. Employee benefits have been measured at the amounts expected to be paid when the liability is settled.



Provision is made for the Association's liability for long service leave from commencement of employment.

e) Provision

Provisions are recognised when the Association has a legal or constructive obligation, as a result of past events, for which it is probable that an outflow of economic benefits will result, and that outflow can be

reliably measured.

Provisions are measured at the best

estimate of the amounts required to settle the obligation at the end of the reporting period.

f) Impairment of Assets

specific projects and events is not brought to account as revenue in the current year but deferred as a liability in financial statement until spent for the purpose received.

Capital Grants

Grant income received relating to the purchase of capital items is shown as Unamortized Capital Grant and brought to account over the expected life of the

At the end of each reporting period, the entity reviews the carrying values of its tangible and intangible assets to determine whether there is an indication that those assets have been impaired. If such an indication exists, the recoverable amount of the asset, being the higher of the asset's fair value less costs to sell and value in use, I compared to the asset's carrying amount. Any excess of the asset carrying value over its recoverable amount is recognised in the income and expenditure statement.

g) Revenue

Revenue is brought to account when received and to the extent that relate to the subsequent period it is disclosed as a liability.

h) Grant Income

Grant income received, other than for specific purpose, is brought to account over the period to which the grant relates.

Deferred Income

Unspent grant income received in relation to assets in proportion to the related depreciation charge.

Interest Revenue

Interest revenue is recognised using the effective interest rate method, which for floating rate financial assets is the rate inherent in the instrument.

Donations

Donation income is recognised when the entity obtains control over the funds which is generally at the time of receipt.

All revenue is stated net of the amount of good and services tax (GST).



APPENDIX C – INDEPENDENT AUDITORS REPORT

**MICHAEL KIERNAN
& ASSOCIATES**

ACCOUNTANT FCPA

PO Box 60
NEWPORT VIC 3015

TEL: 9314 6011
FAX: 9314 4774

370 BLACKSHAW ROAD
ALTONA NORTH
ABN 82 957 136 008

23 October 2020

Walker Close and Brooklyn Hall Association Inc.
180 Millers Road
ALTONA NORTH VIC 3025

**Independent Audit Report To The Members Of
Walker Close and Brooklyn Hall Association Inc.**

On the basis of information provided by the committee Walker Close and Brooklyn Hall Association Inc., I have audited the special purpose Income Statement, Balance Sheet and Statement of Cash Flows for the period ended 30 June 2020 as well as notes comprising a summary of significant accounting policies and other explanatory information, and the committee's report.

The specific purpose for which the special purpose financial report has been prepared is set out in the notes to the accounts. The extent to which Accounting Standards have or have not been adopted in the audit of the special purpose financial report is set out in the notes to the accounts.

Committee's responsibility for the financial report

The committee of the association is responsible for the preparation of the financial report, and has determined that the basis of preparation described in the notes, is appropriate to meet the requirements of the Associations Incorporation Reform Act 2012. The committee's responsibility also includes such internal control as the committee determines is necessary to enable the preparation of a financial report that is free from material misstatement, whether due to fraud or error.

Auditor's responsibility

Our responsibility is to express an opinion on the financial report based on our audit. We have conducted our audit in accordance with Australian Auditing Standards. Those standards require that we comply with relevant ethical requirements relating to audit engagements and plan and perform the audit to obtain reasonable assurance whether the financial report is free from material misstatement.



I have conducted an independent audit of the financial reports in order to express an opinion on it to the members of the organisation. My audit has been conducted in accordance with professional reporting requirements (APS9) to provide reasonable assurance whether the financial reports are free of material misstatement. My procedures included examination, on a test basis, of evidence supporting the amounts and other disclosures in the financial reports, and the evaluation of accounting policies and significant accounting estimates. These procedures have been undertaken to form an opinion whether, in all material respects, the financial reports are presented fairly in accordance with professional reporting requirements and statutory requirements so as to present a view which is consistent with my understanding of the organisation's financial position, the results of its operations and its cash flows.

Audit Opinion

In my opinion the financial report of the association has been prepared in accordance with the *Associations Incorporation Reform Act 2012* including:

- a) giving a true and fair view of the entity's financial position as at 30 June 2020 and of its performance for the year ended on that date; and
- b) complying with Australian Accounting Standards as referred to in Note 1 to the financial statements.

The financial report has been prepared to assist Walker Close and Brooklyn Hall Association Inc. to meet the requirements of the *Associations Incorporation Reform Act 2012*. As a result the report may not be suitable for another purpose. To the extent permitted by law, I do not accept liability for any loss or damage which any person, other than the organisation, may suffer arising from any negligence on my part. No person other than the committee and members Walker Close and Brooklyn Hall Association Inc. should rely on the special purpose financial report. It is not prepared on the basis of providing investment or bank finance information. The special purpose financial report was prepared exclusively for the benefit of the committee and members of Walker Close and Brooklyn Hall Association Inc. and the purpose identified above. We do not accept responsibility to any other person for the contents of the special purpose financial report.

Independence

In conducting our audit, we have complied with the independence requirements of the Australian professional ethical pronouncements.

Potential Impact of Subsequent Event COVID – 19 and other significant events:

I have communicated with the committee regarding, among other matters, the planned scope and timing of the audit and significant audit findings, including any significant deficiencies in internal control that I may identify during the audit. Potential Impact of Subsequent Event COVID - 19 : There may be a material change in the assets of the organisation related to events and conditions due to COVID - 19, subsequent to balance date. These events may cause a significant change in asset values of the

association and there may be a material change in income earning capacity of the organisation. These events may also have an impact on future income and continued viability of the organisation. However, the financial impact to the organisation or any decline in asset values, cannot be reasonably estimated. In extreme conditions the organisation may also cease to continue as a going concern.

Inherent limitations

Due to the inherent limitations of an assurance engagement, together with the internal control structure it is possible that fraud, error, or non-compliance with the listed provisions may occur and not be detected. A reasonable assurance engagement for the year ended 30 June 2020 does not provide assurance on whether compliance with the listed provisions will continue in the future.

We draw attention to the effects of the corona virus pandemic. The pandemic poses significant risks to the super organisation for the current year and for future years. It is beyond the scope of the audit to account for those risks to the assets of the organisation. The auditor takes no responsibility for how the committee account for and plan for the effects of the virus upon the organisation's assets. The auditor urges the committee to take reasonable steps to mitigate the risks of the virus.

A handwritten signature in black ink, appearing to read 'Michael Kiernan'.

MICHAEL KIERNAN
23 October 2020

Liability limited by a scheme approved under Professional Standards Legislation

