



# Walker Close and Brooklyn Hall Association Inc.

## ANNUAL REPORT 2016-17

*31st October 2017*

### Walker Close Community Centre

---

180 Millers Road, Altona North 3025

### Brooklyn Community Hall

---

Cypress Avenue, Brooklyn 3012

---

# Contents

Acknowledgements	1
Executive Summary	2
About Us	3
Organisational Overview	5
Services and Programs	6
Chairperson's Report	9
Volunteering & Auspice Support	10
Centre Manager's Report	11
Centre Attendance	13
Treasurer's Report	14
Financial Statement	15
Independent Auditor's Report	19
Walker Close Community Centre	21
Brooklyn Hall	22
Contact Information	23

### *Celebrating Diversity Week 2017*

Traditional dancing from the following local communities:

- Tongan,
- Maori,
- Australian Aboriginal,
- Cook Islander; and
- Congolese



## Acknowledgements

*The Walker Close and Brooklyn Hall Association Inc. would like to thank the following organisations for their on-going support.*



### **Hobsons Bay City Council**

We proudly thank Hobsons Bay City Council for the recurrent funding support provided to the association to help cover the operation costs for Walker Close Community Centre and Brooklyn Hall.



### **Victorian Department of Health and Human Services**

We thank the Victorian government Department of Health and Human Services (DHHS) for the recurrent funding support provided to the association to help cover management and coordination costs.



### **ExxonMobil Altona Refinery**

We would like to extend our appreciation for the substantial contribution made towards the purchase of computers, data projectors, website design software, data projector screen and in-kind office furniture which benefits the association and the community at large.



### **Officeworks**

We are appreciative to the Altona North Store for supporting the Altona North and Brooklyn Community in partnership with Walker Close and Brooklyn Hall Association Inc.



### **Hobsons Bay Community Fund**

We would like to thank the Hobsons Bay Community Fund for supporting the "Revive" exercise program for people over 50 with a disability. This program benefits elderly people through healthy exercise, creating connections with likeminded people and establish friendships and a sense belonging in the community.



Walker Close and Brooklyn Hall  
Association Inc.



**Altona North and Brooklyn has unemployment levels that are twice the state average and is ranked 15<sup>th</sup> most disadvantaged post code in Victoria.**

## Executive Summary

Walker Close and Brooklyn Hall Association Incorporated is a growing prospect. The main objective of the Association is to provide a welcoming environment which is affordable and accessible to everyone within the local community while recognising that our community is located in an area of significantly disadvantage and has a high mix of culturally and linguistically diverse (CALD) communities made up of over 40 different nationalities. The centre provides a place where community members can come together to find learning opportunities, skills development, support, companionship and involvement in the local community.

### WHAT IS IMPACTING OUR COMMUNITY CENTRE?

The local community is complex, with a high number of disadvantaged people and with high level of cultural and linguistic diversity seeking support and services. There are complex social issues that need to be addressed such as relief services, wellbeing support for elderly people, personal counselling, referral services, concerns about safety and social isolation in the area. Our slogan is "our diversity is our beauty". With this insight, we closely monitor the programs/activities and services we deliver to ensure they are meeting the needs of the community.

- Altona North and Brooklyn are areas of significantly disadvantage with low levels of education.
- The area has unemployment levels that are twice the state average and is the 15th most disadvantaged post code in Victoria.

### WHAT HAVE WE ACHIEVED?

Some of the highlights that the Association has achieved in the past twelve months include:

- Increased participation/attendance at Walker Close and Brooklyn Hall by 51%
- Provided programs and activities relevant to community needs
- Volunteers at Walker Close contributed a combined average of 35 hours per week
  - This equated to an increase in volunteering time by 25%
- Provided over 35 diverse programs and activities for our community
- Maintained on going management capability and built good governance
- Provided auspice support to non-incorporated community groups
- Ran short courses relevant to the local community including:
  - New Enterprise Incentive Scheme (NEIS) program
  - Drug and Alcohol support programs
- Walker Close has developed partnerships with over 20 organisations and groups within our community.
- We warmly celebrated diversity week 2017 with a mix of traditional dancing at Brooklyn Hall from the following community groups:
  - Tongan,
  - Maori,
  - Australian Aboriginal,
  - Cook Islander; and
  - Congolese







The Aboriginal people who lived in what we now know as the City of Hobsons Bay are the Yalukit Wilum, a name meaning 'river camp' or 'river dwellers'.

## About Us

### Acknowledgement of Traditional Owners

The Walker Close and Brooklyn Hall association acknowledges that we are gathered on the traditional land of the Kulin nation. We recognise the First People's relationship to this land and offer our respect to their elders, past and present.

### Overview

- Walker Close Community Centre is one of the nine neighbourhood house/community centres in Hobsons Bay.
  - Opened in 2004 (Incorporated in Nov 2006)
  - Funded by Hobsons Bay Council, DHHS, and hiring of facilities
  - Support from local businesses
  - Services Brooklyn and Altona North
- The Association operates two council owned facilities:
  - Brooklyn Hall (Cypress Avenue); and
  - Walker Close Community Centre.
- Both facilities have multipurpose function rooms which are available for hire by community and commercial groups.
- 57% of people in Altona North speak a language other than English at home.





**Walker Close Community Centre was purpose built by Hobsons Bay City Council in partnership with the local community and opened in July 2004.**

## MANNER OF ESTABLISHMENT

Brooklyn Community Hall in Cypress Avenue, originally built in 1969, was extensively redeveloped by Hobson's Bay City Council in 2006. Walker Close Community Centre was purpose built by Hobsons Bay City Council in partnership with the local community and opened in July 2004.

The establishment of Walker Close and Brooklyn Hall Association Inc. has been undertaken strategically by Hobsons Bay City Council in partnership with the local community with the aim to support disadvantaged residents in Altona North and Brooklyn through a community service organisation.

The community management model is used by Hobsons Bay City Council for most of its community facilities. In November 2006, Walker Close Community Centre and Brooklyn Community Hall became incorporated under this model.

Walker Close & Brooklyn Hall Association Inc. is one of nine Community Centres (Neighbourhood houses) under Hobsons Bay City Council, which provides diverse programs and services to the residents of Altona North and Brooklyn, in Melbourne's inner Western Suburbs.

## OUR PURPOSE

Working with local communities to enhance quality of life by providing a range of Programs and Services that are responsive to the identified needs of all residents living within the Altona North and Brooklyn area and surrounding suburbs, especially those disadvantaged by age, income, disability or social isolation, to families with young children, and to promote the wellbeing of all members of the community.

## OUR STRATEGIC OBJECTIVE(S)

To ensure that Walker Close and Brooklyn Hall Association provides vibrant, accessible, and diverse services and programs to assist in building and celebrating the capacity of the local community.

## OUR ROLE (MISSION)

To deliver affordable and accessible programs and services in partnership with the local community, to provide opportunities, build capacity and advocate for our community.

## OUR VISION

The Walker Close & Brooklyn Hall Association Incorporated is committed to being responsive to community needs and creating a community that sustains itself.

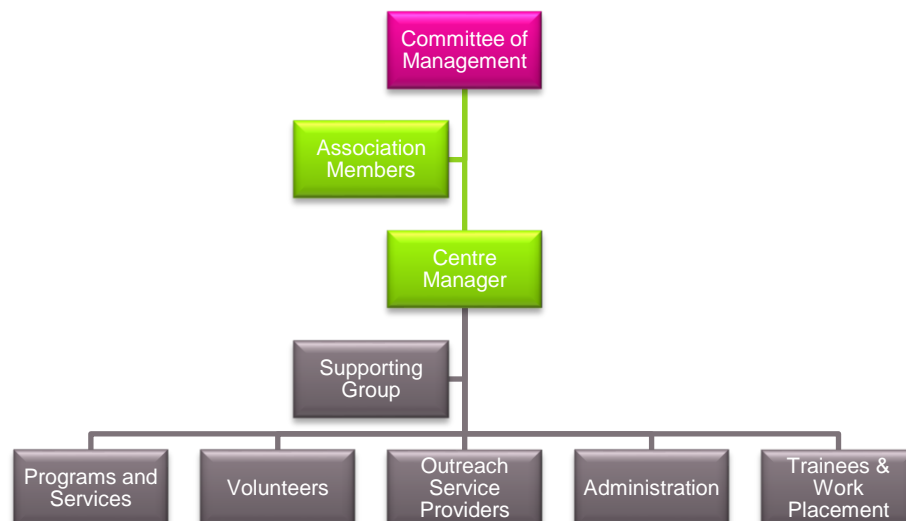
## OUR APPROACH (VALUES)

- Quality and continuous improvement
- Inclusive and non-discriminatory services
- Making decisions transparently to ensure accountability and financial stability
- Providing a safe, caring environment built on trust
- Professional and respectful interactions with our service users, colleagues and volunteers.



We are constantly on the lookout for new board members to join the Committee of Management. If you are interested in volunteering please contact the Walker Close Community Centre.

## Organisational Overview



### Our Board

The Walker Close & Brooklyn Hall Association Inc. board typically consists of 6 to 8 members who are appointed in accordance with the associations' rules. Board members are elected each year at the AGM.

### Committee of Management

Role	Name
Chairperson	Rebecca Nikau
Vice Chairperson	Clovis Mwamba
Secretary	Wayne Bowers
Treasurer	Tmaru Taur
Youth Representative	Position open
Ordinary Member	Brian Long
Ordinary Member	Mark Clarke
Ordinary Member	Goeff Peacock

### Role of the Board

The board is responsible for the good governance and effective leadership of Walker Close & Brooklyn Hall Association Inc. it:

- sets the strategic direction, objectives and performance targets for the organisation
- appoints the Centre Manager
- monitors the operational and financial performance of the organisation
- oversees compliance with laws, regulations and other obligations
- sets and monitors internal controls to manage risks
- ensures appropriate conduct and effective stakeholder relationships
- manages and monitors board and committee conduct and performance





**Currently there are over 30 programs and services provided at Walker Close Community Centre and Brooklyn Hall.**

## Services and Programs

The association provides services and programs which are dynamic; there is always a change depending on the needs of the community. When some of the existing community groups move out newly emerging community groups join the community. And thus, new programs are developed and put in place to meet the needs of the present-day community needs in line with the Council's Social Planning Process.

### Services

- Immunisation
- Emergency Relief
- Recreational Social Group
- Tax help
- New Mums Group
- Migration Service
- Maternal & Child Health
- Seniors Group
- General Information (referrals)
- Internet Access (for job search)
- Crisis Intervention Counselling



### Migration advice

This is a free professional advice service for families, students and others. We would like to thank Jambu Nathan for providing this support to numerous community members every year.

### Free Tax-Help

The service is provided by volunteers assigned by the Australian Taxation Office. The service is run every year starting in July through to end of October and it is helpful to the community who do not have access or knowledge to lodge their own income tax returns. We would like to thank Brian Gorman for dedicating his time and helping our community members. We wish to thank the Australian Taxation Office for assigning professionals every year and working in partnership with us.

### Crisis Intervention services

One of the crucial services provided at Walker Close is the outreach crisis intervention counselling and emergency assistance service provided every Tuesdays and Wednesdays. This outreach service has been provided for several years by Laverton Integrated Community Service in partnership with Walker Close. We wish to thank Laverton Community Integrated Services for providing this vital service at Walker Close.

This service has been crucial to the disadvantaged members of Altona North and Brooklyn community. Walker Close is proud to provide support to the service including providing a convenient space, referrals, receiving enquiries over the phone, in-person, promoting the service, providing appropriate information on the service.







**Many of our services and programs originate from the Altona North and Brooklyn community which is made up of over 40 different nationalities with equally diverse interests.**

## Programs

- Revive exercise program
- Karate for self defence
- Bone Boosters for health and wellbeing
- Chin Community Choir Group
- Columbian traditional dance
- Advanced Math and English for young children
- Tongan community group
- Purely speaking for autistic children
- Combined Probus - retired and semi-retired professional group
- Computer training courses
- Camera Professional - photographic club
- Group exercise for health - social
- TAP-JAZZ & Ballet Dance
- Calisthenics Australian Dance
- Professional Courses
- Brooklyn community forum
- Various casual programs

## Revive exercise program

A program specifically designed to improve the fitness and wellbeing of people over 50's with disabilities. The exercise is run by a qualified professional to maintain health and fitness while also socialising with other likeminded people. I would like to thank Melissa Moorfoot, through her engaging program she has been able to encourage participation and create new interest in the group.

## Training courses

One of Walker Close Community Centres strategic objectives is to work in partnership with teaching organisations to deliver short courses of benefit to the local community. In this reporting period, Holmesglen College, under the New Enterprise Incentive Scheme (NEIS), delivered the Certificate IV training course in Small Business Management over 3 terms. The course is run for eligible job seekers who are interested in running a new small business.

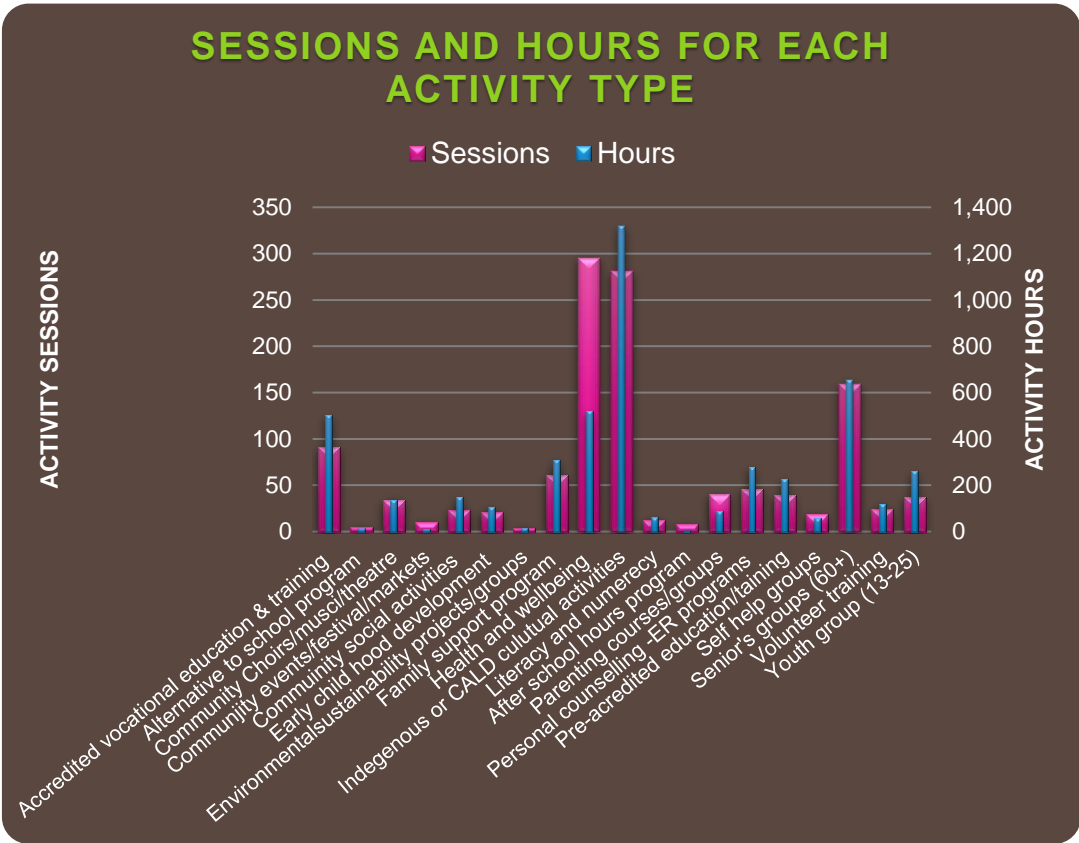
How can NEIS Help?

- Accredited small business training
- Income support for up to 39 weeks once the business started (if eligible)
- Home rent assistance for up to 26 weeks (if eligible)
- Mentoring and support during the first year of the new business



Programs/Activities

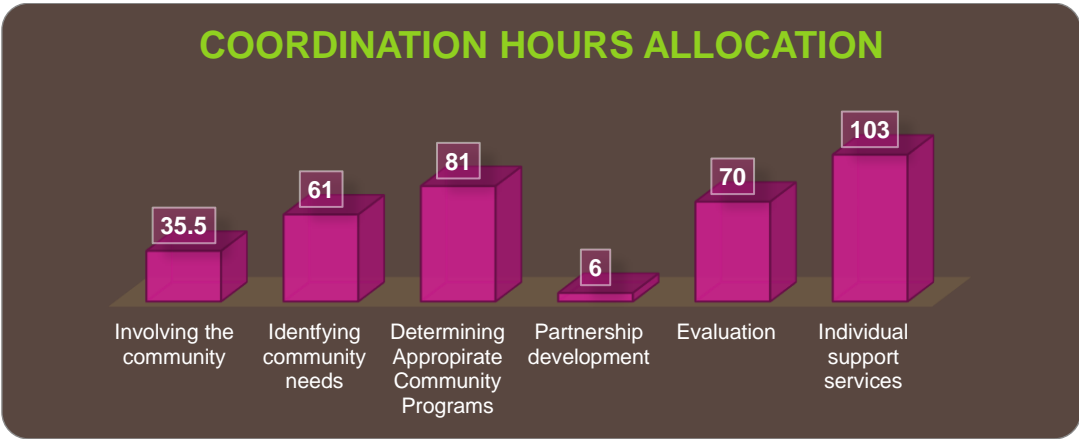
Walker Close Community Centre is a place where families and individuals can come to get support and services; a place where people get connected and can find information and resources, where they can come together in activities and events; learn and share the diverse experience and cultures that creates a strong community.



Throughout the year quite a number of structured and unstructured; one off casual programs and functions such as, workshops, training, family gathering, social events and other celebrations have been running.

Coordination/implementation

The Centre is open 50 weeks in a year for an equivalent of 1,900 office hours. To effectively deliver the service 356.5 hours proportionately distributed to major activities as shown below.





**"Whakaaro" my inner most thought, my gift, my understanding and my intention.**

**Everything comes back to my first thought, when I sit and ponder, unless we understand ourselves, there is no way to understand anyone else. This is how to cope with the challenges of tomorrow.**

**Rebecca Nikau  
Chairperson**

## Chairperson's Report

It is with great pleasure that I present my report as Chairperson of the Walker Close and Brooklyn Hall Association Incorporated. It is exciting to see that the community centre has been very successful in running several special days over the past twelve months that has given the association extra exposure with in the local community.

During this year, the committee of management continued reviewing policies and procedures along with implementing the three-year 2016-19 strategic plan and making sure to sustainable deliver our services and programs in meeting the growing needs of Altona North and Brooklyn Community.

We are operating from two different locations, Walker Close in Altona North and at Brooklyn Community Hall in Brooklyn. The two venues are well used by a diverse range of community groups running various activities every day and during evenings.

It is great to see both facilities are becoming a community hub where the community can comfortably meet and create connections; learn; share experiences and celebrate their diverse cultures together which creates a sense of belonging in the community.

I would like to extend my gratitude to our dedicated Centre Manger Ayelign Tessema, without him we wouldn't have successfully achieved our gaols and fulfilled our community needs. Ayelign has a high level of versatile skills and extensive sector experience and we are extremely lucky to have him as manager. He is of great value to the organisation. I have no doubt that he has guided our growth in community service delivery.

We are also fortunate to have Collen Nelson handling administration duties and also, a dedicated volunteer Verana Hunter-Ray. Verana has been a great value to the Centre helping the manger in many ways. Most importantly, organising the record filing system in a more accessible manner.

Also, a big thank you to our secretary, Wayne Bowers for his professional secretarial service to the committee and for working on policies and procedures in collaboration with the centre manager representing the committee as well as being available online or travelling a long distance. We are very privileged to have him on the committee.

I would also like to thank my co-committee members for their time they have each given to the Centre. Without your support and contribution my role as a chairperson would have been harder. That is, we all work closely together to be able to achieve our goals.

As always, thank you to our funding bodies Hobsons Bay City Council (HBCC) and Department of Human and Health Services (DHHS) for providing us recurrent funding support to cover the co-ordination and operation costs respectively.

The Council's commitment to the development of Brooklyn reserve has enhanced and added value to the usability of Brooklyn community hall by the community. In this regard, we are very much thankful the City of Bosons Bay Council for carrying out the project and the EPA for allocating the project funds.

Also, thanks to our cleaner Mark Raye and the team for keeping the centre clean and tidy.

Once again, I wish to extend my many thanks to everyone who has been involved in making our 2016 – 2017 year so memorable.





**Volunteers are an integral part of the Walker Close and Brooklyn Hall Association and we wish to thank all of them for their valuable input.**

## Volunteering & Auspice Support

### Volunteering

The association appreciates the work of all our dedicated volunteers. Volunteering is an opportunity to get involved, learn and give back to community. We could not have achieved the success we have without our volunteer's support.

Board members are volunteers who are totally committed to the association, devoting their time representing the community, supporting the staff and volunteers. The centre is thankful to committee members for their time and energy.

Our Secretary, Wayne Bowers, has been helping very closely on the affairs of organisation, updating policies and procedures, and helping collate the annual report. He is committed and thoughtfully keen person to help in any way he can.

Verana Hunter-Raye. Has been a great value to the centre with her all-round skills and experience has helped the centre in various tasks such as reorganising and updating the record filing system, organising different community group for our cultural diversity week which we warmly celebrated at Brooklyn Hall on 27 Sept 2017 as shown over the page.

Verana, after having had completed her practical work placement with us she continued volunteering and has built well her community service experience. She is keen to learn new things, committed to take responsibilities and accomplishing tasks in a timely manner. She has excellent communication skills and good understanding of community needs. Her active involvement has helped her build her skills and experience about the centre and closely helping the manager. She is a considered candidate for our staff succession plan.

### Auspice Support

Providing auspice support to community groups enables them to secure funding and helps them to accomplish their project pertinent to the funding organisation requirements.

This year we continue providing auspice support to LaPassegARTa for "social Inclusion through Arts- Community engagement" project. The project aim is to bring a community group together through Arts based programs focussing a target group of isolated and disadvantaged older adults with disability which helps remove barriers, challenging practices and changing attitudes which underpin social inclusion.







**No matter where you're from, no matter what your background is, at Walker Close you'll meet people who are like you and people who are not like you, always lots of learning and fun while enjoying the beauty of diversity.**

**Ayelign Tessema  
Centre Manager**

## Centre Manager's Report

The Walker Close Community Centre and Brooklyn Community Hall is a hub for more than 40 different community groups to meet, celebrate, learn, obtain services and plan for their own activities. Every year is a very special year for our association and 2016-17 was no exception.

We have thought hard about different ways to help all the community groups who are members of the association, including the community groups who are non-members but have a strong association with our centre and services.

We are engaged in different programs and activities that are of great interest to our groups. We value our diversity and our slogan is "our diversity is our beauty"; in this respect, we celebrate together all our achievements during the Diversity week. We worked with you to achieve better understanding of the diverse issues. On your behalf, we attended different consultations and meetings including different professional development workshops to improve our skills so we can assist the community better.

To ensure that WCBH remains viable, well-funded, resourced and continues to grow, develop and to satisfy community needs, our staff, tutors, volunteers and committee members worked well together on the following strategic directions:

- **Community support:** we are committed to support existing and newly emerging community groups, as well as, participants in activities and programs.
- **Celebrations:** We have organised and participated in many cultural and traditional celebrations to encourage harmony between cultural groups and to promote better understanding of diversity and multiculturalism.
- **Partnership programs and activities:** We formed partnerships with other agencies to explore potential programs and activities that could adopted and implemented by the community centre;
- **Networking and Promotion:** We participated in different events and activities with the aim to raise the overall profile of the organisation;
- **Program and Activities:** we continued to offer programs and activities in consultation with our members and community. We developed new initiatives/programs based on the needs analysis through evaluation, feedback, and recommendations;
- **Governance:** The overall operation of the organisation has been a busy year of consolidation, continuous improvement and planning for the future. The committee oversee the association compliance in line with the requirements of funding bodies.
- **Strategic plan:** To ensure the community centre service provision is sustainable we developed a succession plan for the staff and committee of management, engagement/marketing plan, strategic/tactical plan; and financial plans.

I am blessed to work under the guidance of a selfless committee of management who have the courage and commitment to address issues and make appropriate decisions for the long-term interest of our organisation and our community.

I would like to conclude with a big thank you to our supporters and service users for your contribution that enable us to provide valuable services to the community as highlighted over the pages.

Looking forward, the next year promises to be busy and exciting as we progress the new strategic plan.



The Association would like to express their appreciation to the Mayor of Hobsons Bay, Cr Sandra Wilson and Hobsons Bay Coordinator Community Development for supporting and attending events at Walker Close Community Centre and Brooklyn Community Hall.

## Student placement and industry experience

The centre is a learning avenue and pathway toward employment. Every year we give the opportunity for students coming from universities, colleges and employment agencies.

This year we have accepted two community development students from Stott's College to complete 160 hours each in fulfilling their diploma course. Also, one vocational work placement student from Karingal Training Institute for 100 hours. The students have successfully completed their placement and have gained valuable industry skills, and developed their communication and interpersonal abilities.

Biljana Joveska from Karingal Training Institute, after having successfully completed her placement, has become an active volunteer at the Centre. We are very pleased to have her with us and as a receptionist filling the other vacant days.

## Partnership and links

No matter how strong individually we are, working in partnership is much more important for a better community service outcome; builds capacity helps to adequately respond to the changing needs of the community. Thus, it is our customary style of working in partnership with various group such as local Government, state government, local businesses and Neighbouring community services.

We have also strong connection with the following external community service providers and local businesses, including:

- Loraine Beddela seniors group
- Annunciation primary school
- Marina Age Care
- Altona North primary school
- Altona Gate management
- Mobil Refinery
- Hobsons Bay Planned Activity group
- Brooklyn Tennis Club
- Altona Gate Kinder
- Altona North Library
- Office Works
- Bunnings

Internal groups include:

- Williamstown camera club
- The United Indian seniors Association
- Cook Islander community group
- Serbian community group
- The Dance Dreamers
- Horn of African community Network
- Altona North combined probus
- Chin community group
- Tongan community group
- Macedonian community group
- Altona karate club
- Maori Polynesian community group

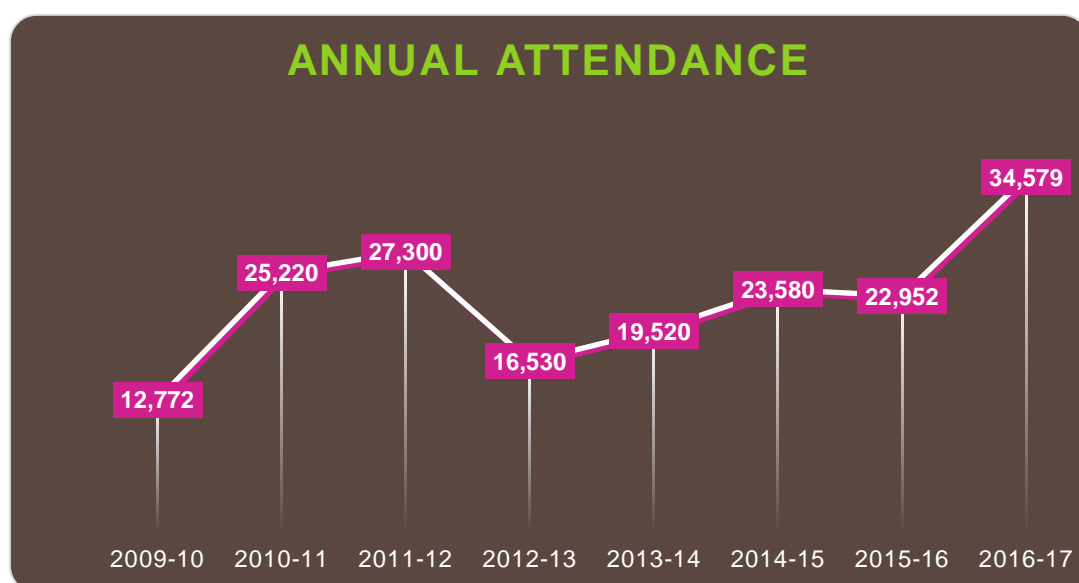




Annual attendance has increase by 51% from 2015-16.

## Centre Attendance

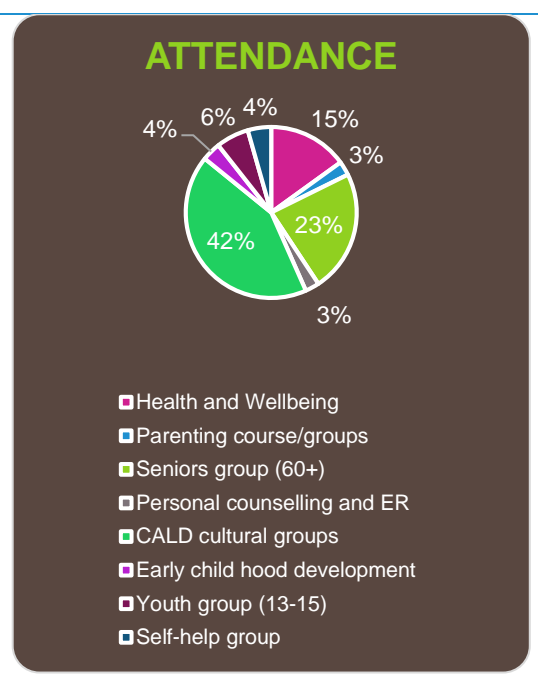
We have had a very busy 12-month period and it was great to see how the community has taken to using the two venues. Various programs/ activities and services have been running actively throughout the year that include: education, health and wellbeing, recreational, sport, social connections, short courses, workshops, meetings, church service and other community functions some of the highlighted throughout the report. The annual attendance and breakdown by activity type are provided in the graphs and tables below.



Throughout the year quite several one off casual programs and functions such as, workshops, training, family gathering, social events and other celebrations also run.

### Summary of Centre Attendance by Activity Type

Activities	Attendance
Health and Wellbeing	85
Parenting course/groups	15
Seniors group (60+)	130
Personal counselling and ER	15
CALD cultural groups	240
Early child hood development	20
Youth group (13-15)	35
Self-help group	25
<b>Total participants in one week</b>	<b>565</b>





**Tmaru Tauri**  
Treasurer

## Treasurer's Report

I feel proud and honoured for being the treasurer of Walker Close and Brooklyn Hall Association Inc. which embraces a great dedication to both members of the centre and the community in providing valuable services and support. I am very pleased to report the Centre annual financial report to the members for the financial year 2016-17 (FY16-17).

This report is complimented by the financial auditor's report of special purpose Income Statement and Balance Sheet for the financial year ended 30th June 2017.

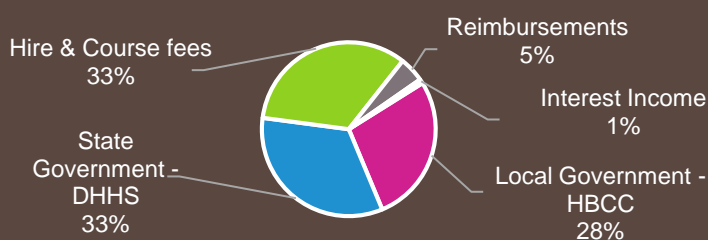
The overall financial performance showed \$4,416 surplus/saving, 3.2% increase compared to last year.

The total income for the financial year was \$172,756, a small increase of 0.2% compared to last year. Total expenditure for the year was \$168,340, a 0.12% increase compared to last year.

The major expenditure items include Wages and Salary, Electricity, and Cleaning services which account for over 70% of the total expenditure.

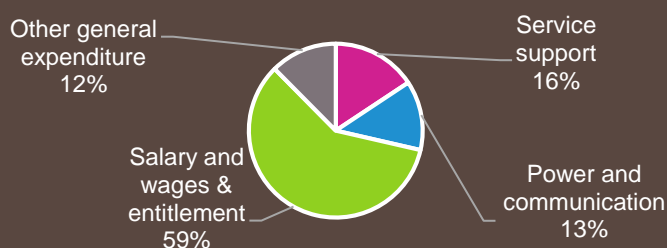
Funding for the association has been received mainly from state and local government; the Victorian government Department of Human and Health Services (DHHS) and Hobsons Bay City Council (HBCC). The breakdown in centre funding is shown in the chart below.

### SOURCE OF FUNDING 2016-17



The funds were carefully monitored and allocated to the areas shown in the chart below.

### ALLOCATION OF FUNDING 2016-17



Our achievements would not be possible without the continuous support of our funding bodies, other local community organisations working in partnership with us, the invaluable support of our paid staff, volunteers, students and every single group member together has contributed to our success. Our Centre Manager, Ayelign Tessema, is a great asset to the organisation; his hard work has made our success possible. To me personally without his assistance my job as a treasurer would have been harder.

I would also like to thank all Management Committee members for their valuable help. I enjoyed watching Walker Close grow into a valuable service that supports the entire community.





## Financial Statement



Walker Close and Brooklyn Hall  
Association Inc.



### STATEMENT BY THE COMMITTEE OF MANAGEMENT

- a) The accompanying Income and Expenditure statement is drawn up so as to give us a true and fair view of the results of the Club's activities for the financial year 30<sup>th</sup> June 2017.
- b) The accompanying Balance Sheet is drawn up so as to give a true and fair view of the results of the statements of affairs of the Club as at the end of the financial year.
- c) At the date of this statement, there are reasonable grounds to believe that the Club will be able to pay its debts as and when the fall due.

This statement is made in accordance with Part 7, Division 2, Para 94(2) (b) of the Associations Incorporation Act. 2012 inclusive of amendments.

Signed: 

MRS REBECCA NIKAU  
CHJAIRPERSON

Signed: 

MRS TMARU TAURI  
TREASURE

DATED: 2/10/2017

DATED: 3/10/2017.



Walker Close and Brooklyn Hall  
Association Inc.

### Profit & Loss Statement 30 June

	2017	2016
	\$	\$
Income		
Government funding		
Operational Grant-HBCC	47,306	47,705
NH-Coordination Grant - DHS	57,206	54,496
Project Grant Income		
Mobil- Altona Refinery	-	5,000
Promotion support HBCCC	855	350
Facility usage Income		
Regular users - WC	26,198	22,145
Regular Users - BH	22,294	21,912
Casual users - WC	1,693	1,959
Casual users - BH	6,020	6,361
Support service income	600	392
Training & Course fees Income		
Course fees	733	909
Miscellaneous Income	286	-
Reimbursement-Utilities	8,015	9,429
Printing and photocopy income	185	209
Total Income	171,392	170,867
Total Cost of Sales	-	-
Gross Profit	<b>171,392</b>	<b>170,867</b>
Expenses		
General Expenses		
Accounts audit fee	1,200	-
Advertising & Marketing	3,506	1,230
Association Membership fee	382	72
office equipment supplies	353	63
Bank Fees	79	62
Janitorial Services - WC	4,653	4,904
Janitorial Services BH	5,607	4,085
Kitchen amenities	204	546
Cleaning supplies	1,638	1,558
Booking Cancellation reimbursement	448	318
WorkCover insurance	573	-
Electricity Expenses WC	14,496	15,157
Electricity expense BH	3,239	3,197
Garbage Cleaning expenses	423	614
Volunteer travel expense	1,916	736
Donations	142	304
Exercise program tutor fees	780	1,333
General Repairs & Maintenance	1,816	138
Printing & photo copy	2,040	2,879
Lease expense office eqpt	1,121	1,068
Program and group support exp.	581	4,730
Computer services & fixtures	145	171
Gathering and Celeb. expenses	-	630
Utility - Water Expenses	623	2,252
Internet & webhosting & Domain name	1,097	440



Stationery supplies	2,600		2,149
Advertising/promotion expense	891		1,551
Waste Removal/Garbage cleaning	35		109
Telephone Expenses	3,985		3,398
Postage	36		40
Miscellaneous. expenses	912		587
Group activities expense	647		414
Meeting amenities	656		356
Meeting worships and conference	1,826		868
MYOB Subscription	2,833		1,739
Subscription and membership fees	51		1,144
Salary and wages	79,433		72,419
Long Service Leave entitlement	1,832		
Accrued Holiday leave	-		9,841
Work Cover Premiums	150		727
Professional development	386		-
Annual Meeting Expenses	1,022		1,231
Admin and General services	9,152		8,532
Travel & Accom. Expenses	905		1,198
Superannuation contribution ex	8,885		8,055
<b>Total General Expenses</b>	<b>163,298</b>		<b>160,848</b>
Depreciation Expenses			
Furniture & fixt Depreciation	217		1,790
Office Equipment Depreciation	1,156		1,585
Computer Depreciation	3,669		3,915
<b>Total Depreciation Expenses</b>	<b>5,042</b>		<b>7,290</b>
<b>Total Expenses</b>	<b>168,340</b>	<b>-</b>	<b>168,138</b>
<b>Operating Profit</b>	<b>3,052</b>		<b>2,729</b>
Other Income			
Interest Income	1,364		1,543
<b>Total Other Income</b>	<b>1,364</b>		<b>1,543</b>
<b>Total Other Expenses</b>	<b>-</b>		<b>-</b>
<b>Net Profit/(Loss)</b>	<b>4,416</b>		<b>4,272</b>



**Balance Sheet as at 30 June**

	<b>2017</b>	<b>2016</b>
	<b>\$</b>	<b>\$</b>
<b>Current Assets</b>		
Bank current account	106,609	95,399
Bank contingent account	98,622	97,258
Petty cash account	500	500
Debit Card account		500
Pre-paid expense		4,407
Accounts receivable	1,171	5,602
<b>Total current Asset</b>	<b>206,902</b>	<b>203,666</b>
<b>Non-Current Asset</b>		
Fixed Assets	103,865	100,043
Acc.Dep.fixed Asset	100,521	95,479
<b>Net non-current asset</b>	<b>3,344</b>	<b>4,564</b>
<b>Total Asset</b>	<b>210,246</b>	<b>208,230</b>
<b>Current liabilities</b>		
Trade creditors	4,506	2,433
Master Card debit account	.....	500
Accrued expenses	1,478	....
Provision for accounts audit fee	1,200	.....
City West Water adjustment	7,546	7,546
Bond with-held	5,353	5,023
Cultural diversity grant		1,600
Auspice fund - THB	1,000	
GST-Liabilities	1,381	4,815
Payroll liabilities	4,542	4,636
Super Ann. Contribution	2,227	2,708
Provision LSL	11,394	9,563
Accrued Holiday leave	10,341	9,841
Accrued overtime		4,730
<b>Total Current Liability</b>	<b>50,968</b>	<b>53,395</b>
<b>Net Asset</b>	<b>159,278</b>	<b>154,835</b>
<b>Retained earning</b>	<b>154,863</b>	<b>150,563</b>
Current earning	4,415	4,272
<b>Total equity</b>	<b>159,278</b>	<b>154,835</b>





## Independent Auditor's Report

### MICHAEL KIERNAN & ASSOCIATES

ACCOUNTANT FCPA

PO Box 60  
NEWPORT VIC 3015

TEL: 9314 6011  
FAX: 9314 4774

370 BLACKSHAW ROAD  
ALTONA NORTH  
ABN 82 957 136 008

20 September 2017

Walker Close and Brooklyn Hall Association Inc.  
180 Millers Road  
ALTONA NORTH VIC 3025

#### AUDIT CERTIFICATE

On the basis of information provided by the directors of Walker Close and Brooklyn Hall Association Inc., I have audited the special purpose Income Statement and Balance Sheet for the period ended 30 June 2017.

The specific purpose for which the special purpose financial report has been prepared is set out in the notes to the accounts. The extent to which Accounting Standards have or have not been adopted in the audit of the special purpose financial report is set out in the notes to the accounts.

#### Scope

The directors are solely responsible for the information contained in the special purpose financial report and have determined that the accounting policies used are consistent with the financial reporting requirements of Walker Close and Brooklyn Hall Association Inc's constitution and are appropriate to meet the needs of the directors and members of the organisation.

I have conducted an independent audit of the financial reports in order to express an opinion on it to the members of the organisation. My audit has been conducted in accordance with professional reporting requirements (APS9) to provide reasonable assurance whether the financial reports are free of material misstatement. My procedures included examination, on a test basis, of evidence supporting the amounts and other disclosures in the financial reports, and the evaluation of accounting policies and significant accounting estimates. These procedures have been undertaken to form an opinion whether, in all material respects, the financial reports are presented fairly in accordance with professional reporting requirements and statutory requirements so as to present a view which is consistent with my understanding of the organisation's financial position, the results of its operations and its cash flows.

The audit opinion expressed in this report has been formed on the above basis.



Audit Opinion

In my opinion, the financial statements of Walker Close and Brooklyn Hall Association Inc. do give a true and fair view of the organisation's financial position as at 30 June 2017 and of its performance for the year ended on that date.

To the extent permitted by law, I do not accept liability for any loss or damage which any person, other than the organisation, may suffer arising from any negligence on my part. No person other than the directors and members of Walker Close and Brooklyn Hall Association Inc. should rely on the special purpose financial report. It is not prepared on the basis of providing investment or bank finance information. The special purpose financial report was prepared exclusively for the benefit of the directors and members of Walker Close and Brooklyn Hall Association Inc. and the purpose identified above. We do not accept responsibility to any other person for the contents of the special purpose financial report.



MICHAEL KIERNAN

Liability limited by a scheme approved under Professional Standards Legislation



Walker Close and Brooklyn Hall  
Association Inc.



**The Walker Close Community Centre was purpose built by Hobsons Bay City Council, opening in 2004.**

## Walker Close Community Centre

Walker Close is an ideal place for the community. It has a welcoming atmosphere attracting lots of interest lots of different people coming and going. It is a focal point for all community groups to meet and learn from each other. It truly is a pleasing place to be. With this insight, quite a lot of programs and activities run throughout the year.

Some of the regular programs, services and activities run include:

- Health and wellbeing exercises programs continue run progressively every Tuesdays and Wednesdays Bone boosters and weight lifters
- Revive exercise program designed for elderly people with disability every Monday
- Crisis intervention counselling and referral service every Wednesday and Thursdays
- NEIS-Training program to assist people who are unable to establish won business
- Certificate IV community services training
- Various community group practicing their culture and belief
- Certificate III children service course
- Migration professional advice for joining family members
- New mums group and breast feeding etc.
- Professional camera club
- Immunisation services
- Burmese community group run their cultural and belief program
- Advanced learning community group
- Tonga community group practice their cultural and belief program
- Other programs and activities, various on off functions etc.

To effectively use the two venues additional facilities such as data projectors, projector screens, podiums and other sources have been included which helped very much to deliver courses, workshops and for presentations.





**Brooklyn Community Hall in Cypress Avenue, originally built in 1969, was extensively redeveloped by Hobson's Bay City Council in 2006.**

## Brooklyn Hall

It is very exciting to see Brooklyn Community Hall has become more known and usable from year to year. In this reporting period, we have had quite a number of casual and regular programs/activities. Some of the regular programs run include:

- Karate for self-defence has been running actively every week on Mondays and Thursdays.
- Macedonian seniors group meet every Wednesdays and make a life
- Retired and semi-retired group of people met and share life experience
- Cook Islander community group practice their culture and belief
- Marelly performing Arts-Cook islanders
- Brooklyn Community Reference Group
- Calisthenics dance performance groups
- Yoga exercise, transport training
- Tonga community group
- Serbian community group
- Brooklyn Community Action Group
- Brooklyn Community Reference Group

## Brooklyn Reserve improvement

Council's commitment for the Brooklyn Reserve improvement: open space, more car parks, playground, foot path etc has enhanced the quality of community services delivery at Brooklyn community hall. Lots of interests have been raised. While appreciating council's effort for improving the reserve, additional improvements are required to the hall itself. Some of the improvements that we reflected in our previous reports include:

- replacing the old oven with a better industrial type;
- more storage room at back of the hall;
- installing a raised stage inside the hall; and
- maintain and varnish the floor boards as they are wearing out.





## Contact Information

### **Walker Close and Brooklyn Hall Association Inc.**

180 Millers Road,  
Altona North 3025

**Tel:** (03) 9318 0521

**Email:** [admin@walkerbrooklyn.com.au](mailto:admin@walkerbrooklyn.com.au)

[www.walkerbrooklyn.com.au](http://www.walkerbrooklyn.com.au)



**Walker Close and Brooklyn Hall**  
Association Inc.



**Walker Close and Brooklyn Hall**  
Association Inc.